



OUR BUSINESS ACTIVITIES

FACILITIES



Office space:

800 m²

Storage and production area:

14,000 m²

Open-air storage:

3,000 m²

Warehouse capacity:

15,000 t



Sawing and machining center:

15 bandsaw machines,
dimensions up to 1,000 × 1,200 mm

QUALITY



Certifying authority:

TÜV

Certificate:

ISO 9001:2015

Certificate number:

01 100 95127

Date of expiry:

08.06.2026



MAXIMUM PERFORMANCE. UP TO THE SMALLEST DETAIL.



We guarantee first-class products coupled with fast and reliable delivery.

- As a family-run group of companies, we offer a standard of service that benefits from short lines of communication and fast response times. This means that our customers benefit directly from our dedicated efforts each and every working day.
- All materials stocked by our company are produced at highly qualified factories according to strict quality standards.
- We offer a comprehensive stock comprising 15,000 tons and 2,500 articles. Our product range encloses tool steel and high speed steel, as well as PM-steel under the exclusive brand *powderTEC*®.
- At our state-of-the-art sawmill we are able to produce cuts up to a diameter of around 1,000 mm and blocks in dimensions up to 1,000 x 1,200 mm.

- Our high-speed saws also allow us to produce cuts in large dimensions in the shortest of time.

You can reach us Mondays to Thursdays from 8 a.m. to 4.30 p.m. and Fridays from 8 a.m. to 3 p.m.

**Or visit us on the internet:
www.oberste-beulmann.de**



Follow us on LinkedIn

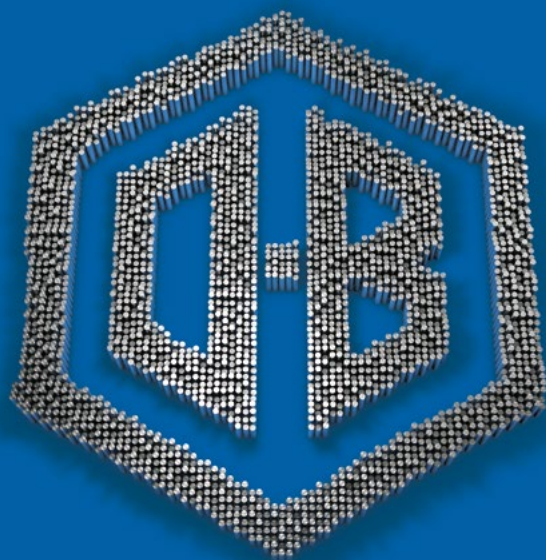


STOCK PROGRAM As of 02.04.2025. Updates possible.

MATERIAL	ROUND*	FLAT*	SQUARE*	SHEETS*
1.2080	10-403	40-610 × 13-100	20-300	0.6-12.5
1.2083/ESU	20-303	600 × 300	20-300	
1.2312	20-603	40-610 × 20-150	20-300	
1.2316 + QT	20-303	on demand	20-300	
1.2329	100-603			
1.2343/ESU	10-853	300-1.020 × 20-500	20-300	
1.2344/ESU	10-653	400-1.020 × 15-450	20-300	
1.2358 + QT		600 × 120-400	20-300	
1.2360 mod.		27-800 × 3-65		
1.2363	10-403	40-610 × 20-150	20-300	0.6-12.5
1.2365/ESU	20-403	150-250 × 50-200		
1.2367/ESU	15-663	150-800 × 100-300	100-250	
1.2379	10-803	20-810 × 10-400	10-300	0.6-12.5

MATERIAL	ROUND*	FLAT*	SQUARE*	SHEETS*
1.2436	15-453	20-300 × 10-70	10-120	
1.2510	10-323			
1.2550	20-152			
1.2714 + A	20-803	100-1.020 × 100-560	20-510	
1.2714 + QT	20-803	300-1.020 × 200-610	20-600	
1.2767/ESU	16-453	500 × 20-150	20-300	
1.2842	10-453	15-610 × 10-200	20-200	0.6-12.5
1.3243	3-141	21-505 × 10-200	20-150	0.6-12.5
1.3343/ESU	1-353	20-505 × 10-200	20-300	0.6-12.5
1.4034		on demand		0.6-12.5
1.4112		on demand		0.6-12.5
OBK8 ESU	50-503	20-800 × 10-400	10-300	

* all dimensions in mm



powderTEC®
PM-steel with choice

MATERIAL	ROUND*	FLAT*	SQUARE*	SHEETS*
PT-S23	3,5-353	20-600 × 10-250	100-300	on demand
PT-S30	3,5-353	20-600 × 10-250	100-300	on demand
PT-S52	3,5-353	20-600 × 10-250	100-300	on demand
PT-S53	3,5-353	20-600 × 10-250	100-300	on demand
PT-S60	3,5-353	20-600 × 10-250	100-300	on demand
PT-SM4	3,5-353	20-600 × 10-250	100-300	on demand
PT-K03	3,5-353	20-600 × 10-250	100-300	on demand
PT-K09	3,5-353	20-600 × 10-250	100-300	on demand
PT-K10	3,5-353	20-600 × 10-250	100-300	on demand
PT-K39	3,5-353	20-600 × 10-250	100-300	on demand
PT-M39	10-150	20-600 × 10-250	100-300	on demand
PT-M42	10-250	20-600 × 10-250	100-300	on demand

Our range of special steels

Oberste-Beulmann offers a carefully composed assortment of selected materials in various dimensions and forms.

Beyond that, our product range also comprises **special materials, precision flat steel, client's drawings and metal powder.**

Other dimensions/product forms and materials are possible on demand from new production.

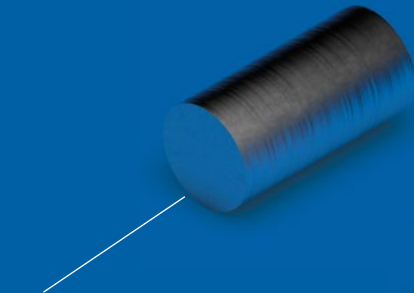


**powderTEC®: PM-steel
of the newest generation**

* all dimensions in mm

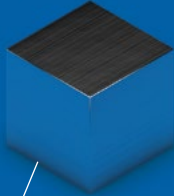


PRODUCT FORMS



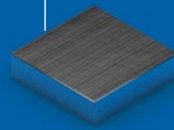
Round bars

Cold-working tool steel
High speed steel
Hot-working tool steel
Die steel
Plastic mould steel
Ø 1–980 mm



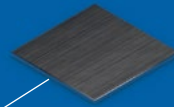
Square bars

Cold-working tool steel
Hot-working tool steel
Die steel
10–500 mm



Flat bars

Cold-working tool steel
High speed steel
Hot-working tool steel
Die steel
Plastic mould steel
20–1,000 × 10–500 mm

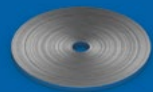


Sheets

Cold-working tool steel
High speed steel
Stainless steel
0.6–13 × 500–1,000 mm

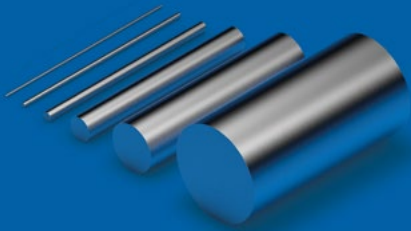
Circles

Cold-working tool steel
High speed steel
Stainless steel



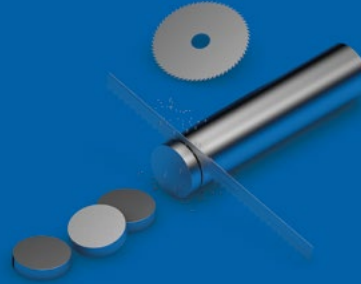
SERVICES

Storage



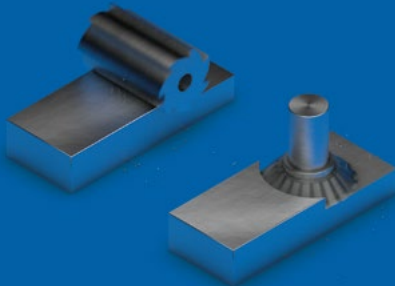
- Stock
- Call-off warehousing
- Customer stockings
- Consignment stocks

Sawing



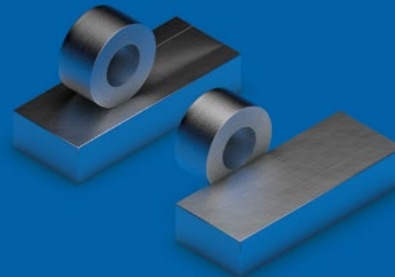
- Single-item production
- Series production

Milling



- 20 × 20 × 20 bis 800 × 400 × 4,000 mm
- Single-item production
- Series production

Grinding



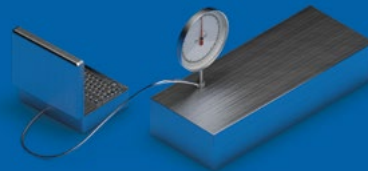
- Up to 800 × 400 × 4,000 mm
- Single-item production
- Series production

Drilling



- 3–600 mm
- Solid drilling
- Drilling out
- Core drilling
- Single-item production
- Series production

Checking



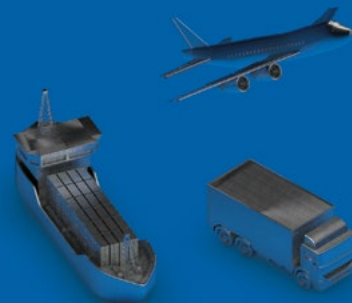
- Material testing
- Analysis
- Strength

Heat treatment



- In vacuum
- In protected gas atmosphere
- In open atmosphere

Logistics



- Delivery worldwide
- Express service



Our products and services are known for their quality, flexibility and sustained yield. This is how we create trust through reliability and aim to provide lasting benefits for our customers.

LOCATIONS



Germany

Remscheid (head office and warehouse)
Krefeld (sales agency South-East-Asia, Middle East)
Remshalden (sales agency Southern Germany, Switzerland)

Netherlands

Zaltbommel (warehouse and service-center)

France

Chalon-sur-Saône (sales agency)

Italy

Turin (sales agency)

Spain

Irun (sales agency)

Eastern Europe

Warna, Bulgaria (sales agency)

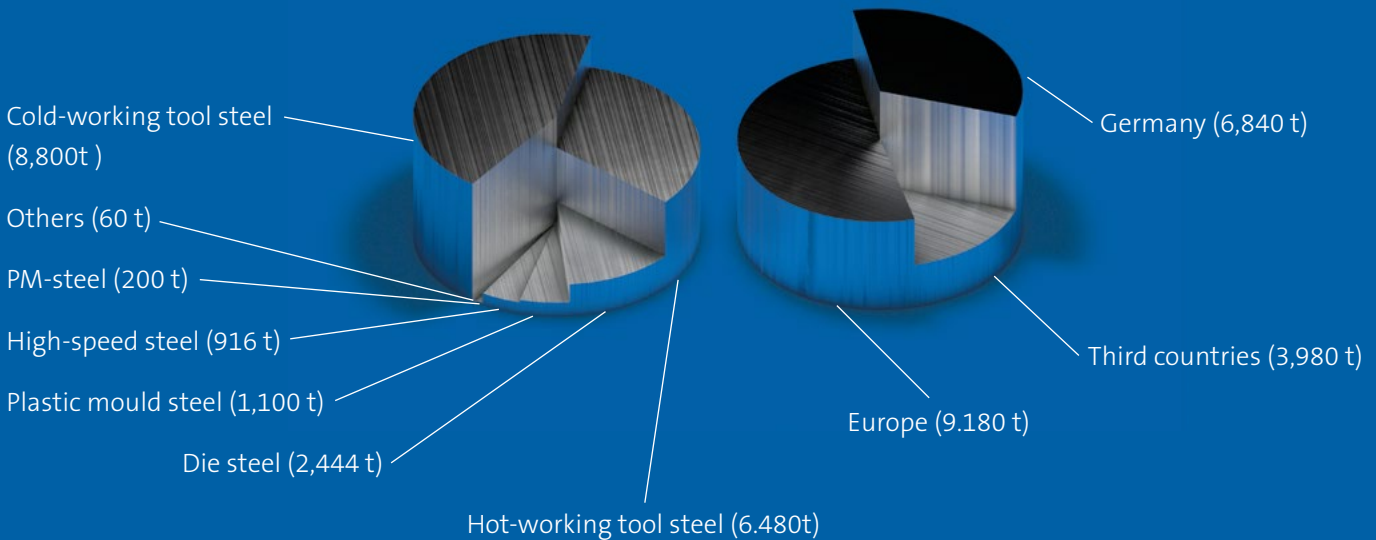
Latin America

Bogota, Columbia (sales agency)

ANNUAL SALES (Remscheid only)

Total: 20,000 t

Sales markets





Wilhelm Oberste-Beulmann GmbH & Co. KG
An der Hasenjagd 2
D-42897 Remscheid
Fon: +49 (0) 2191 936 00
mail@oberste-beulmann.de
www.oberste-beulmann.de



Follow us on LinkedIn